

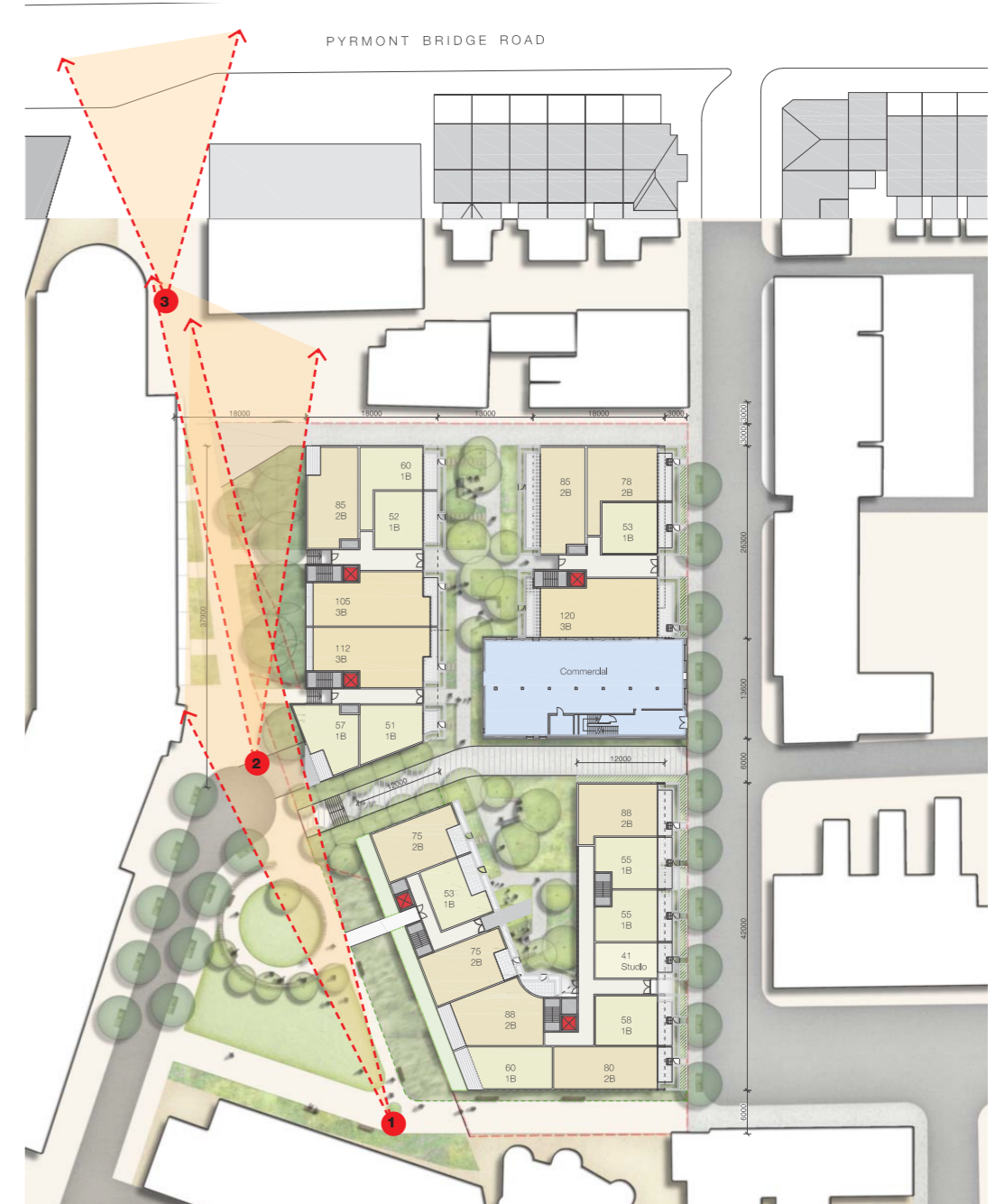
PHYSICAL & VISUAL ACCESS FROM PARK



PHYSICAL ACCESS FROM PARK

The following diagram illustrates clear and continuous physical connectivity across the site in the form of pathways as well as a series of landscaped zones that transition the north-south pathway from park to Pyrmont Bridge Rd:

- / Zone A - The park is the main landscaped feature which connects multiple pathways and through-site links. The southern corner of the five storey building reinforces and strengthens main east-west through-site link whilst allowing for clear north-south access.
- / Zone B - A generously landscaped pathway serves to transition in scale from park to the northern stair whilst also connecting to the northern through-site link running east-west.
- / Zone C - The existing small scale stair that leads to Pyrmont Bridge Rd. Connectivity to the park will be significantly improved.



VISUAL ACCESS FROM PARK

The following diagram illustrates clear and continuous sightlines from various points along the path from the park towards Pyrmont Bridge Rd:

- / 1) Sightline from the park indicates a clear line of sight without hindrance of the five storey building's southern corner.
- / 2) Sightline from cul-de-sac indicates clear line of sight towards stairs and east-west through-site link.
- / 3) Sightline from stair to Pyrmont Bridge Rd.